

ALLBRO UK
FULL COLLECTION
PRICE LIST



Available to order directly from

TMS GRID

COMBINE - CONSULT - CONNECT

www.tmsgrid.com
enquiries@tmsgrid.com



Available to order directly from

TMS GRID

COMBINE - CONSULT - CONNECT

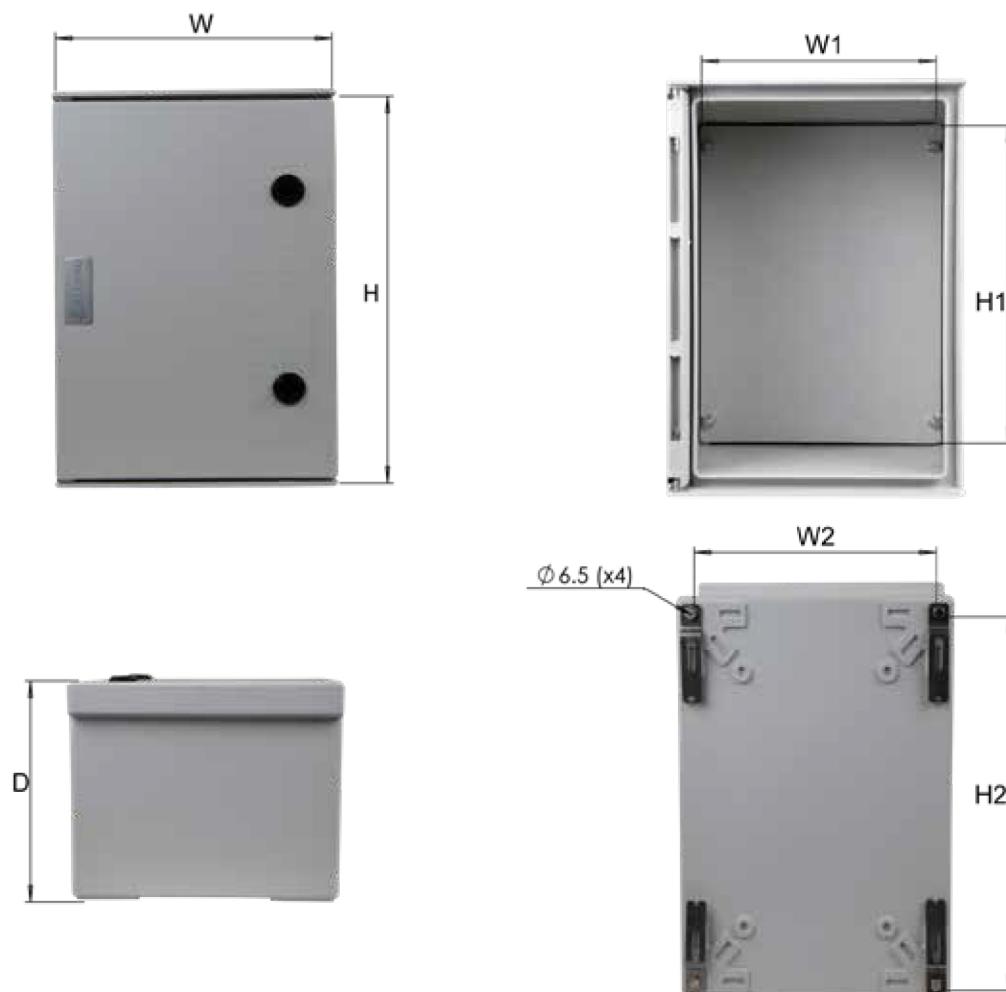
www.tmsgrid.com

enquiries@tmsgrid.com

ALLBRO UK

ALLBROX®
PRICE LIST

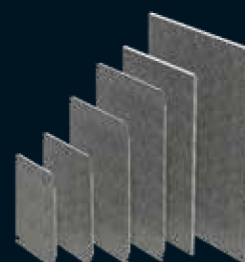




Part Number (Grey)	Part Number (Orange)	Description	H (mm)	W (mm)	D (mm)	W1 (mm)	H1 (mm)	Price (£)
TMS-ALL-003	TMS-ALL-003/O	Allbrox 3 with SMC Device plate	350	250	200	212	317	£93.27
TMS-ALL-004	TMS-ALL-004/O	Allbrox 4 with SMC Device plate	400	300	200	262	364	£126.28
TMS-ALL-004/D	TMS-ALL-004/D/O	Allbrox 4 Deep with SMC Device plate	400	300	273	262	364	£139.69
TMS-ALL-005	TMS-ALL-005/O	Allbrox 5 with SMC Device plate	500	350	200	312	467	£160.74
TMS-ALL-006	TMS-ALL-006/O	Allbrox 6 with SMC Device plate	600	400	200	362	567	£196.38
TMS-ALL-006/D	TMS-ALL-006/D/O	Allbrox 6 Deep with SMC Device plate	600	400	250	362	567	£212.96
TMS-ALL-006_5-L	TMS-ALL-006_5-L/O	Allbrox 6.5 Landscape with SMC Device plate	500	700	246	619	419	£330.33
TMS-ALL-006_5-P	TMS-ALL-006_5-P/O	Allbrox 6.5 Portrait with SMC Device plate	700	500	246	419	619	£330.33
TMS-ALL-007_1-P	TMS-ALL-007_1-P/O	Allbrox 7.1 Portrait with SMC Device plate	828	710	287	634	754	£439.82
TMS-ALL-007_1-L	TMS-ALL-007_1-L/O	Allbrox 7.1 Landscape with SMC Device plate	710	828	287	754	634	£439.82
TMS-ALL-008-P	TMS-ALL-008-P/O	Allbrox 8 Portrait with SMC Device plate	1000	800	320	710	910	£645.48
TMS-ALL-008-L	TMS-ALL-008-L/O	Allbrox 8 Landscape SMC Device plate	800	1000	320	910	710	£645.48

Allbrox Galvanised Steel Device Plate

Part Number	Description	H (mm)	W (mm)	Thickness
TMS-ALL-M/SMPLATE-3	ALL Mounting Steel Plate No.3	311	238	1.6
TMS-ALL-M/SMPLATE-4	ALL Mounting Steel Plate No.4	361	288	1.6
TMS-ALL-M/SMPLATE-5	ALL Mounting Steel Plate No.5	461	338	1.6
TMS-ALL-M/SMPLATE-6	ALL Mounting Steel Plate No.6	554	380	1.6
TMS-ALL-M/SMPLATE-6_5	ALL Mounting Steel Plate No.6_5	590,7	390,7	2
TMS-ALL-M/SMPLATE-7	ALL Mounting Steel Plate No.7	605	532,7	2



Internal hinges.

(Cannot be compromised from outside)

Intergrated "rain canopy"



Multi-angle mounting brackets



Flame Retardant

IP Level: 66

Flush mounted window option

Quarter Turn Lock

Durable GRP Material

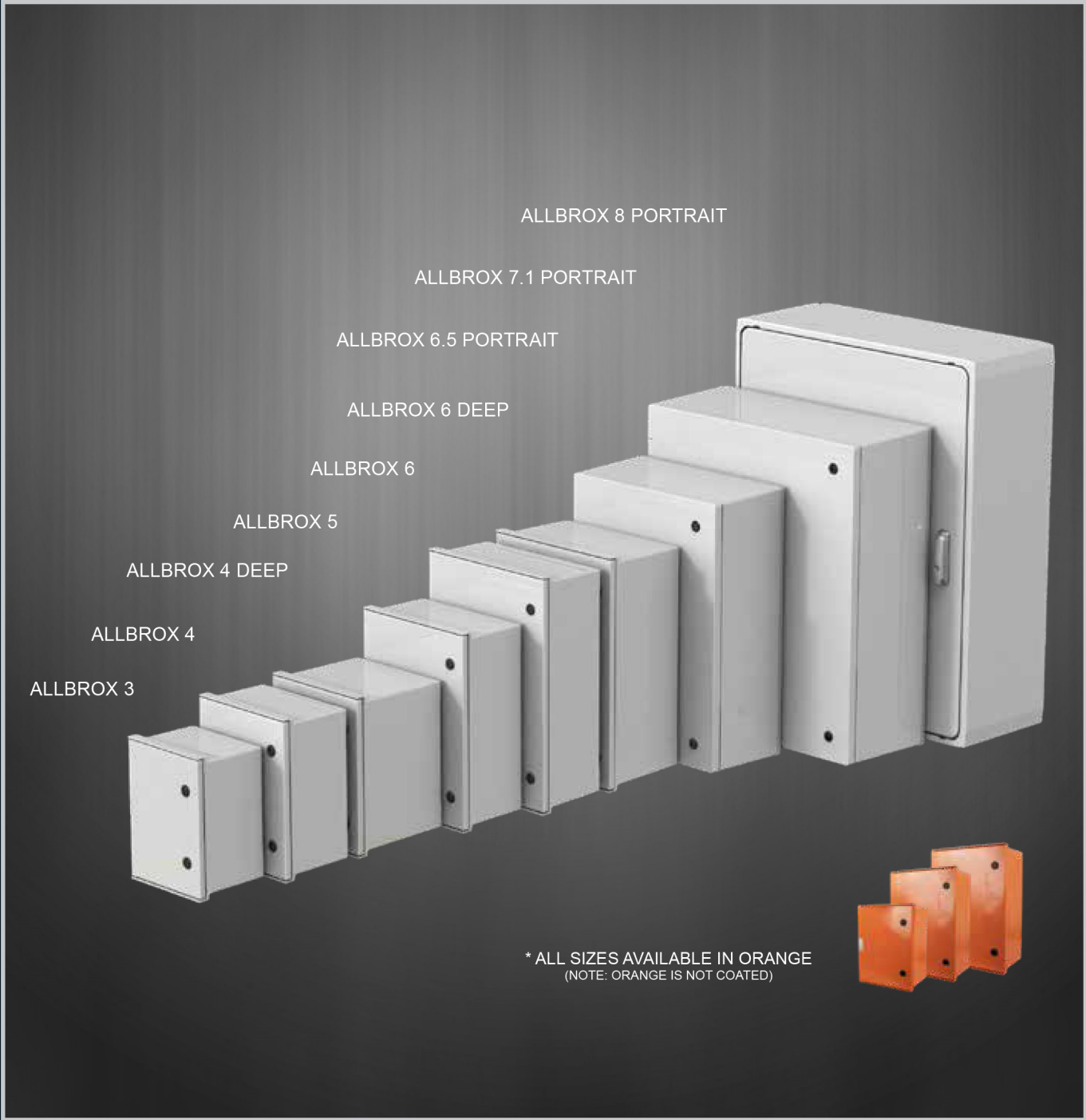
Can accommodate DB Kit/ Inner Door.

* Allbrox 4 Deep and 6 Deep can not accommodate DB Kit



Material	SMC (Sheet Moulding Compound), PC for window			
Operating Temperature	-50° C to + 200° C			
Glow Wire Capability / Flammability	960° / UL94 V0			
Expected UV Life (Direct Exposure)	25 years +			
IP Level	IP66			
IK Level	IK10			
Security Level	1	2	3	4

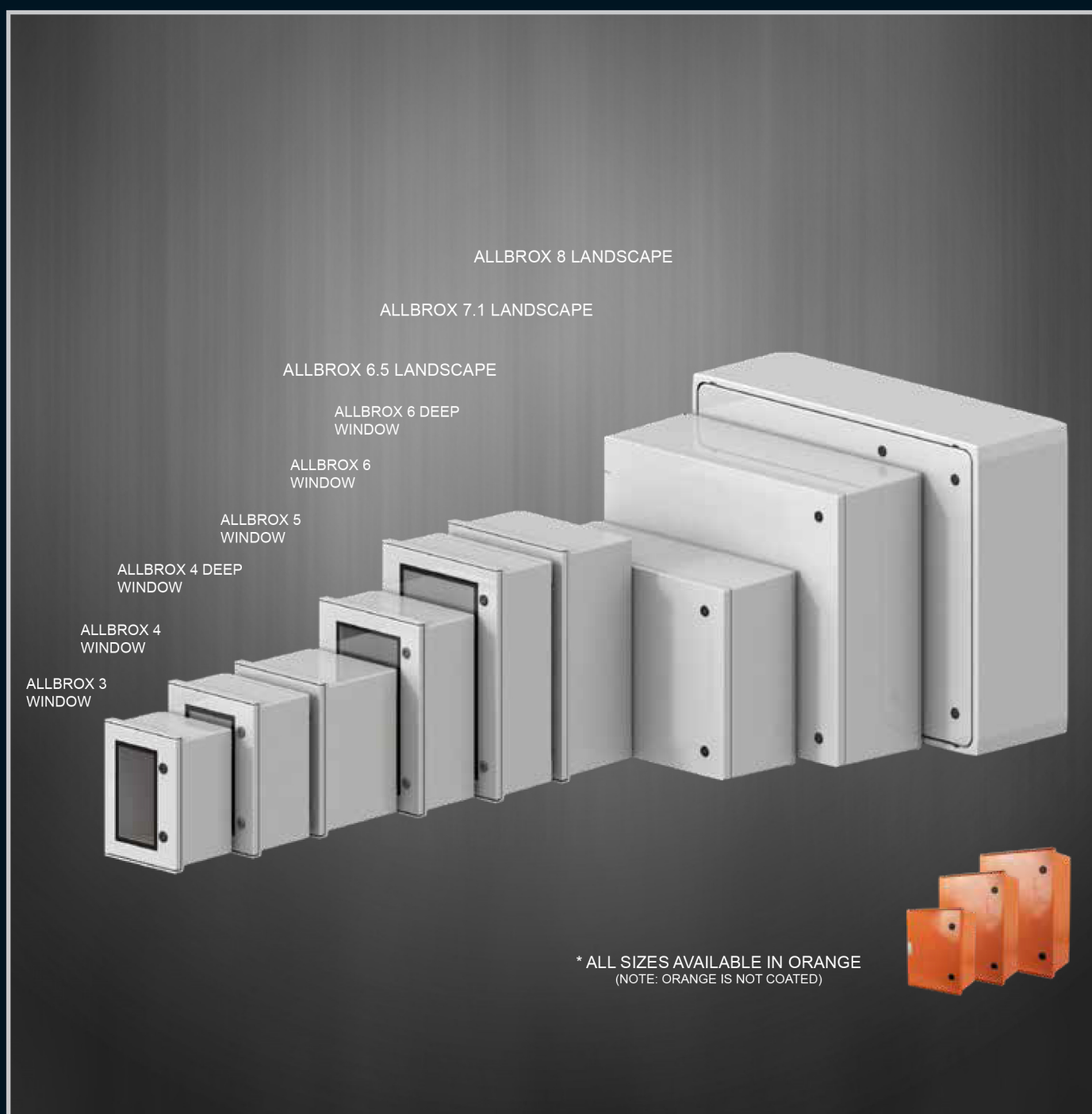
*** PLEASE NOTE:**
- Allbrox® is not suitable to install on back (Face Up)
- Allbrox® 3-6D must be installed in portrait orientation ONLY.



Material	SMC (Sheet Moulding Compound), PC for window			
Operating Temperature	-50° C to + 200° C			
Glow Wire Capability / Flammability	960° / UL94 V0			
Expected UV Life (Direct Exposure)	25 years +			
IP Level	IP66			
IK Level	IK10			
Security Level	1	2	3	4

* PLEASE NOTE:

- Allbrox® is not suitable to install on back (Face Up)
- Allbrox® 3-6D must be installed in portrait orientation ONLY.



ALLBROX® 4-6

Distribution Board Kit



Allbrox® Distribution Board Kit

Part Number	Description	No. of Rows	MCB's Per Row	No. of Neutral Bars	No. of Earth Bars
TMS-ALL-004/DBK-A	Allbrox 4 Distribution Board Kit Assembled	2	10	2x (14 way)	2x (12 way)
TMS-ALL-005/DBK-A	Allbrox 5 Distribution Board Board Kit Assembled	3	13	4x (14 way)	4x (12 way)
TMS-ALL-006/DBK-A	Allbrox 6 Distribution Board Kit Assembled	4	15	5x (15 way)	2x (18 way) + 2x (12 way)

Allbrox® Distribution Board Kit Assembly

1) Remove device plate from the base. Leave the 4 x M6 nuts in place for fixing the mounting rails in place. Fit mounting rails (A) as shown using the 4 x M6 x 12 CH EG screws and M6 washers. Ensure that the bigger space between the hole and end of the mounting rail is fitted toward the hinge side of the box

2) Fit the steel side plates with the plastic supports (B) onto the mounting rails (A) using the 4 x M6 x 12CH EG screws and M6 washers as shown.

3) Fit the steel din rails (C), for breakers, into the plastic supports using 2 x 3.5 x 12 Panpozi thread cutter screws on each end as shown. Fit the steel din rail, for neutral bar, upside down using 2 x 8 x 9.5 thread cutter screws on each end as shown.

3.5 x 12 Panpozi thread cutter screws

8 x 9.5 Panpozi thread cutter screws

4) Clip the plastic Fascia plates (D) into the plastic supports as shown.

Product	No. Fascia Plates
ALLBROX 4	2
ALLBROX 5	3
ALLBROX 6	4

ALLBROX® 4-6

Inner Doors



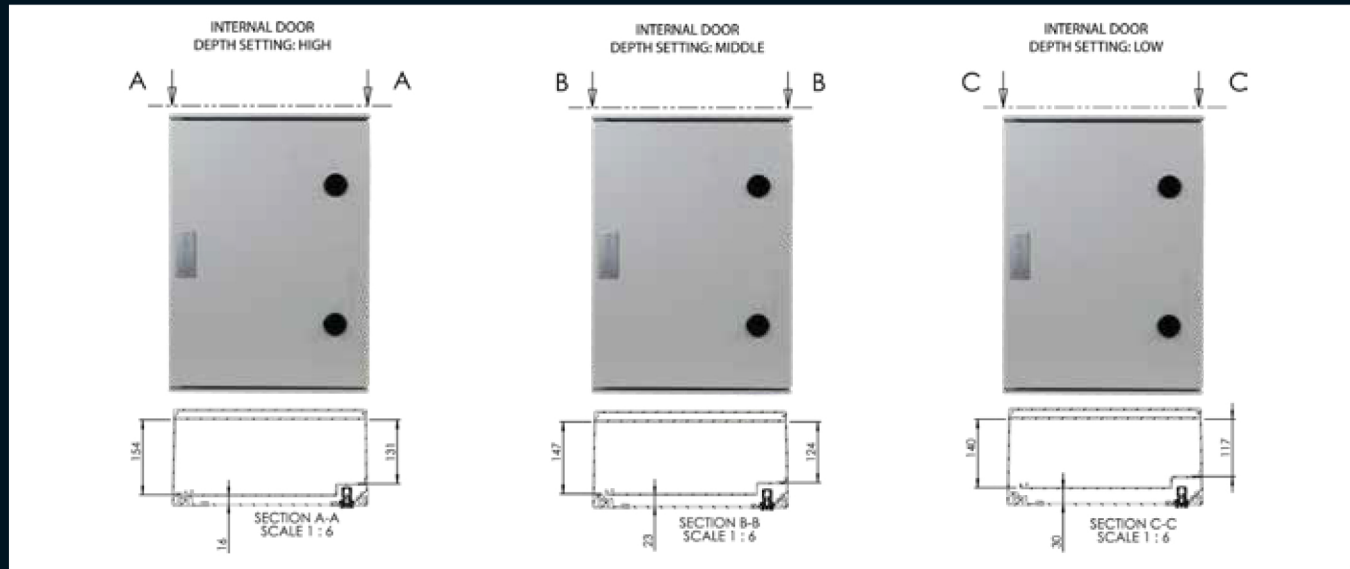
Allbrox® Inner Door

Part Number	Description
TMS-ALL-004/IN/DOOR	Allbrox 4 Inner Door
TMS-ALL-005/IN/DOOR	Allbrox 5 Inner Door
TMS-ALL-006/IN/DOOR	Allbrox 6 Inner Door

Allbrox® with PC Window

Part Number	Description	Price (£)
TMS-ALL-003/CLEARPC	Allbrox 3 with clear Polycarbonate window	£109.33
TMS-ALL-004/CLEARPC	Allbrox 4 with clear Polycarbonate window	£140.35
TMS-ALL-005/CLEARPC	Allbrox 5 with clear Polycarbonate window	£175.89
TMS-ALL-006/CLEARPC	Allbrox 6 with clear Polycarbonate window	£206.96

Allbrox ®Inner Door Fitting Options



1) To remove or place the inner door in an Allbrox® simply pull the two hinge pins as indicated towards each other.

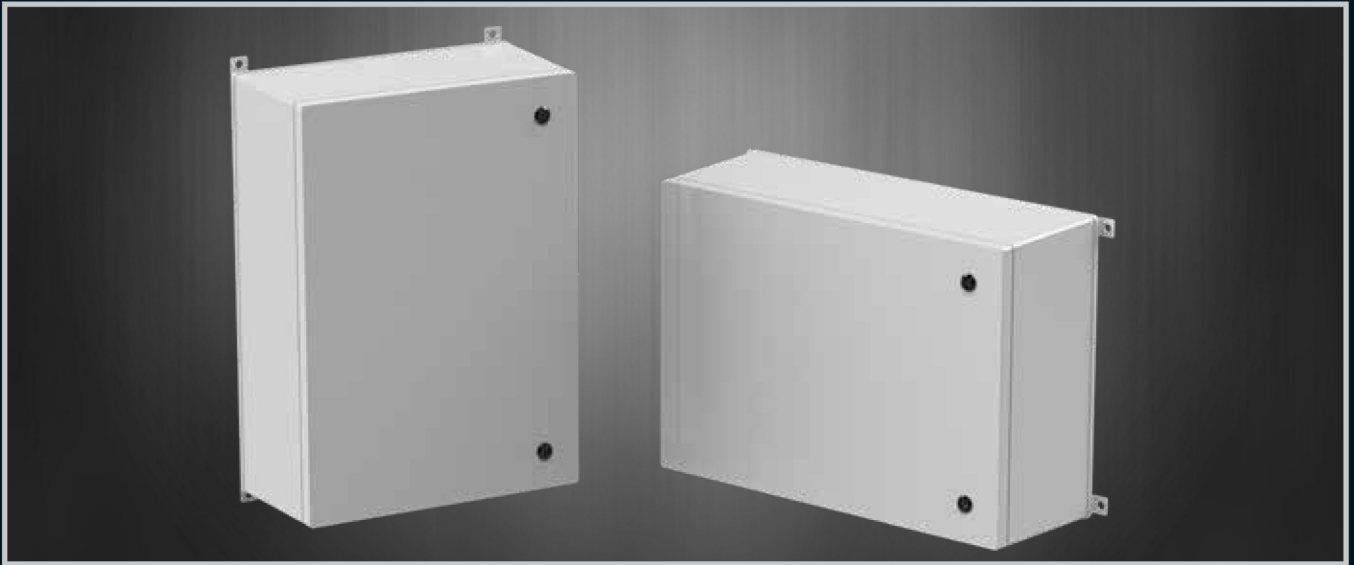


2.1) To remove the door, complete step 1 and pull the inner door towards yourself.

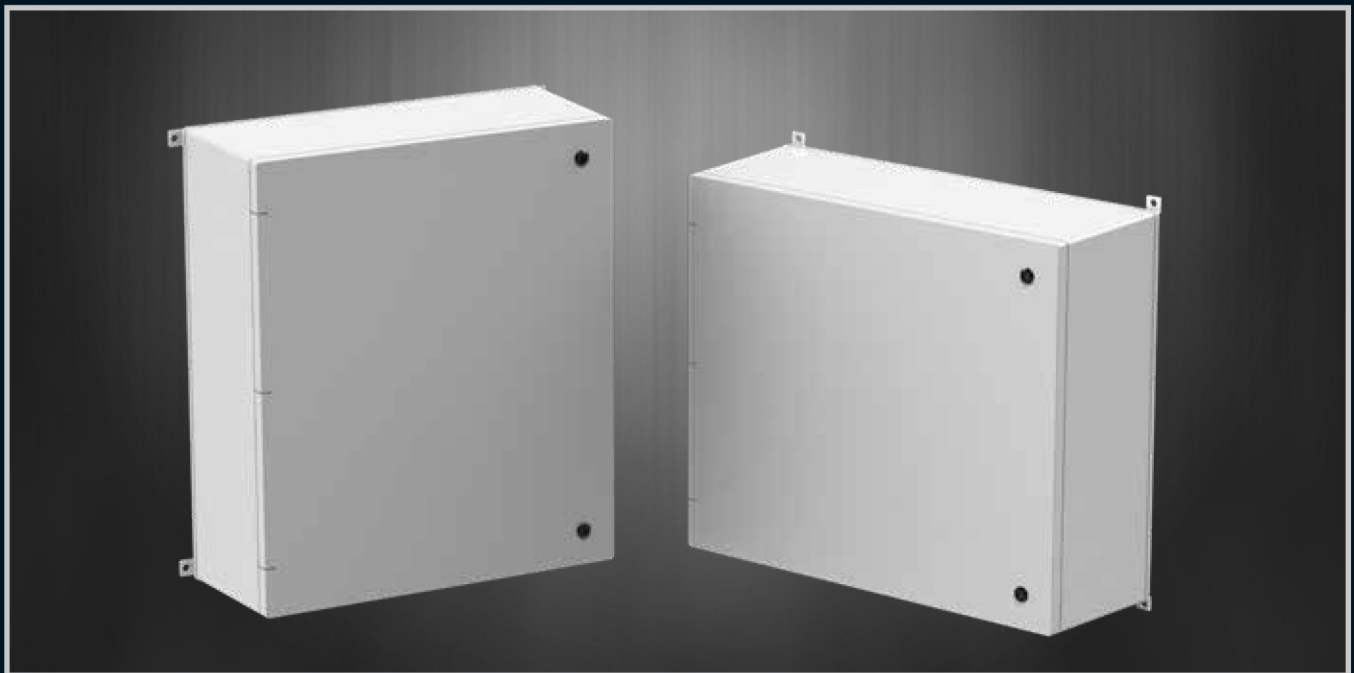
2.2) To place the inner door into the Allbrox® complete step 1 and let the hinge pins go once the pins are in-line with the hinge sleeve.

* Please note that the construction of the 6.5 and 7.1 sizes differs from the smaller sizes (3-6D)

ALLBROX® 6.5



ALLBROX® 7.1



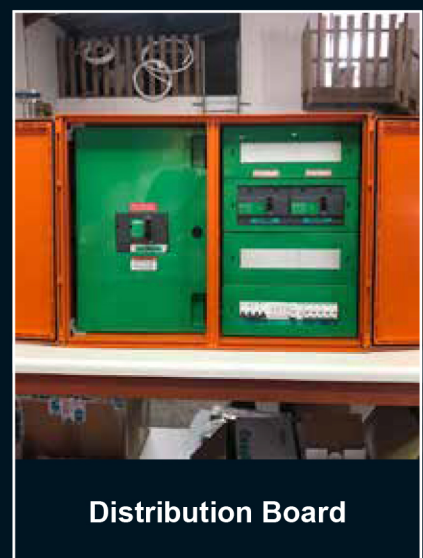
Door locator



Extra strength lid



Easily Removable door





Available to order directly from

TMS GRID

COMBINE - CONSULT - CONNECT

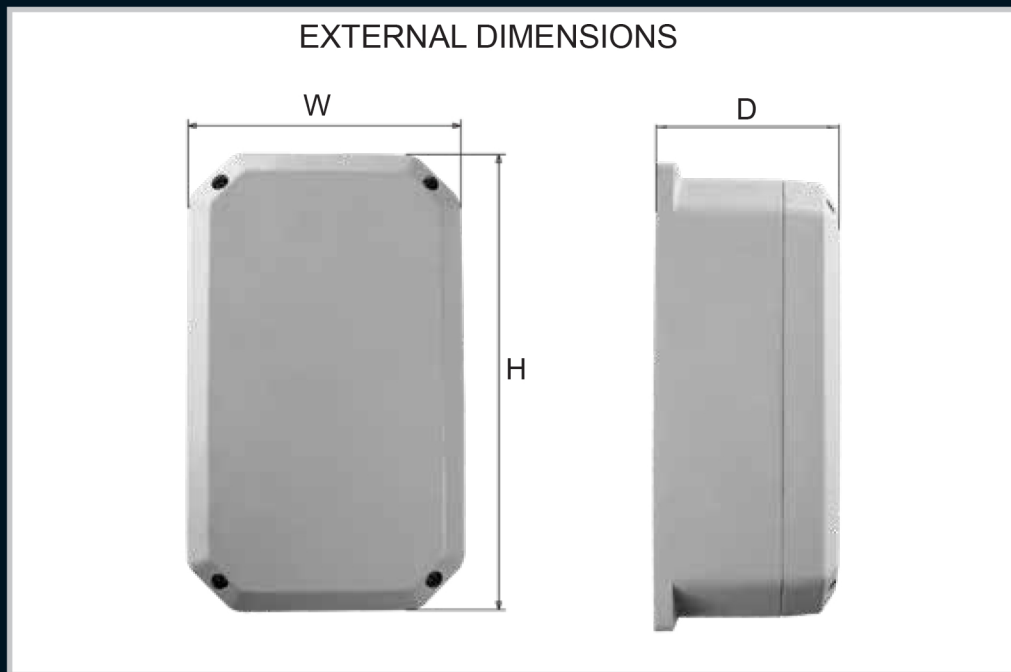
www.tmsgrid.com

enquiries@tmsgrid.com

ALLBRO UK
ALLROBUST™
PRICE LIST



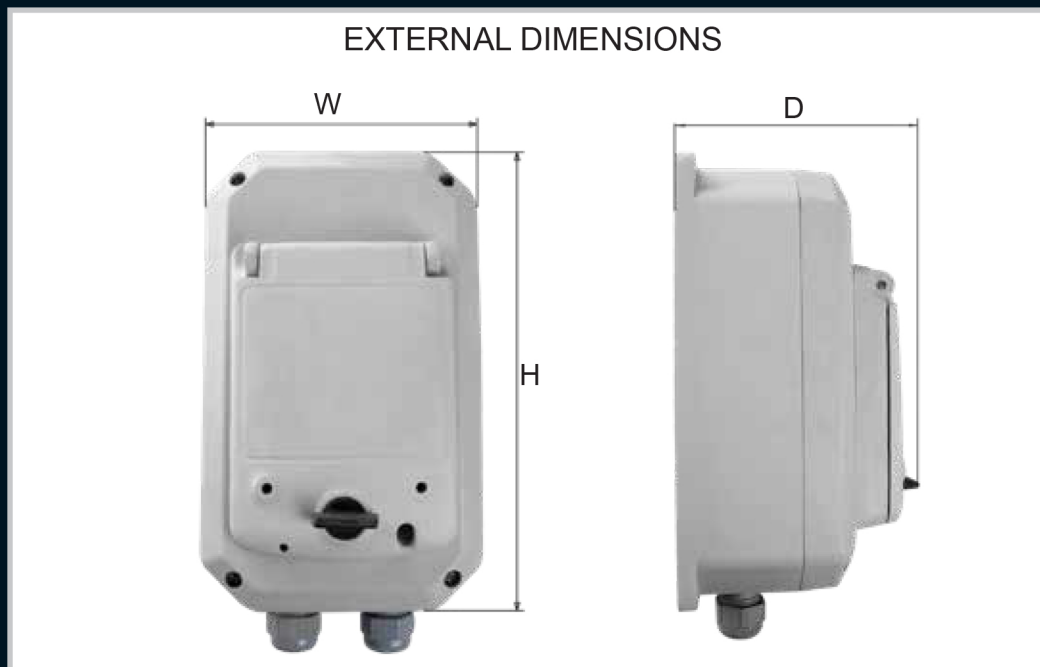
Material	SMC (Sheet Moulding Compound)			
Operating Temperature	-50° C to - 200° C			
Glow Wire Capability / Flammability	960° / UL94 V0			
Expected UV Life (Direct Exposure)	25 years +			
IP Level	IP66			
IK Level	IK10			
Security Level	1	2	3	4



Part Number	Description	H (mm)	W (mm)	D (mm)	Price (£)
TMS-040-916	Robust 201208 Empty Enclosure with No Flap	205	125	80	£14.00
TMS-040-935	Robust 261810, Empty Enclosure with No Flap	261	181	104	£19.91
TMS-040-962	Robust 282513 Empty Enclosure with No Flap	280	250	130	£36.45
TMS-040-952	Robust 483080 Empty Enclosure with No Flap	476	296	80	£43.50
TMS-040-937	Robust 574310 Empty Enclosure with No Flap	570	430	100	£94.30

- Weather and UV resistant
- Up to 4 pole din breakers or isolators
- IP Level: 66
- Made from GRP - Glass Reinforced Polyester

Material	SMC (Sheet Moulding Compound)			
Operating Temperature	-50° C to - 200° C			
Glow Wire Capability / Flammability	960° / UL94 V0			
Expected UV Life (Direct Exposure)	25 years +			
IP Level	IP66			
IK Level	IK10			
Security Level	1	2	3	4



Part Number	Description	H (mm)	W (mm)	D (mm)	Price (£)
TMS-040-910	Robust 201208 PC Flap with Barrel Lock	205	125	80	£38.98
TMS-040-911	Robust 201208 PC Flap with Plastic Lock	205	125	80	£37.63
TMS-040-912	Robust 201208 GRP Flap with Barrel Lock	205	125	80	£38.98
TMS-040-913	Robust 201208 GRP Flap with Plastic Lock	205	125	80	£37.63

- Weather and UV resistant
- Up to 4 pole din breakers or isolators
- IP Level: 66
- Made from GRP - Glass Reinforced Polyester



Available to order directly from

TMS GRID

COMBINE - CONSULT - CONNECT

www.tmsgrid.com

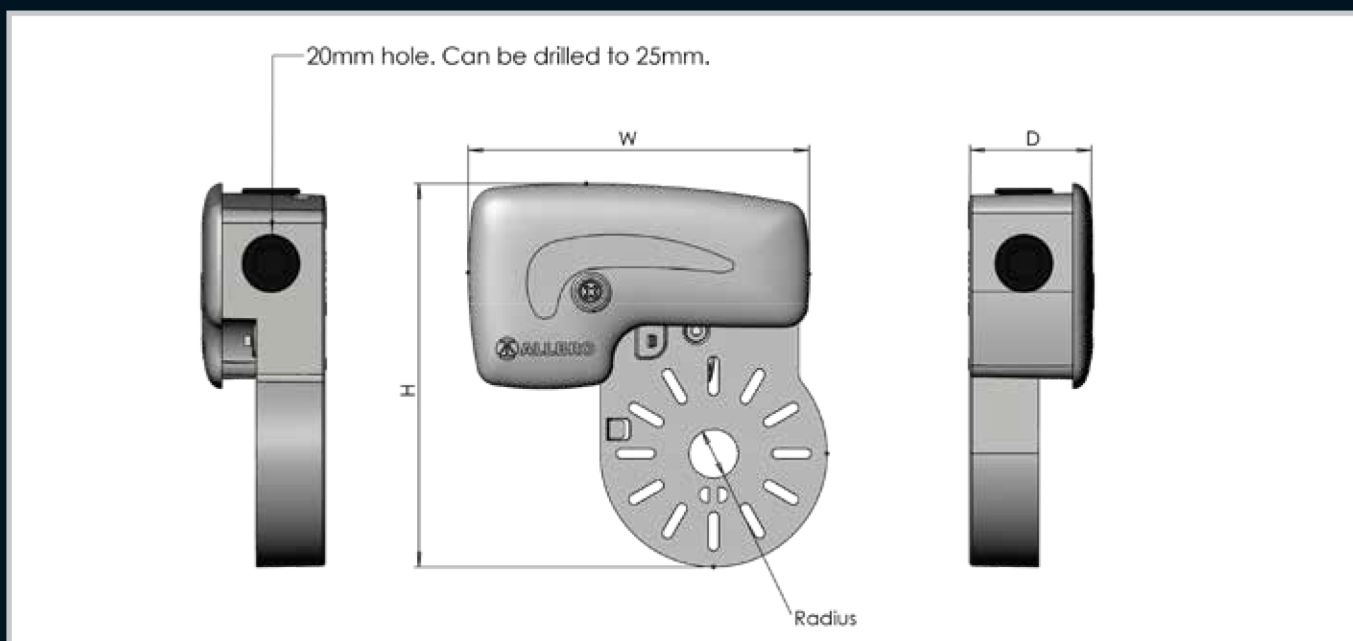
enquiries@tmsgrid.com

ALLBRO UK
CAMERA-DEN®
PRICE LIST



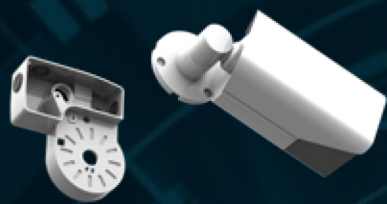
Material	DMC (Dough Moulding Compound)			
Operating Temperature	-50° C to + 200° C			
Glow Wire Capability / Flammability	960° / UL94 V0			
Expected UV Life (Direct Exposure)	25 years +			
IP Level	IP66			
Security Level	1	2	3	4

Allbro has launched the very first camera enclosure of its kind. Designed and made in South Africa the Camera-Den addresses the unique challenges of this application in a manner that has never been done before. Once one lays eyes upon Allbro's new "Camera Nest" it becomes difficult to even call the new invention a camera box.



Part Number	Description	H (mm)	W (mm)	D (mm)	Radius (mm)	Price (£)
TMS-040-958	Camera-Den Complete 90mm	156	139	51	20	£10.11
TMS-040-977	Camera-Den Complete 110mm	174	139	51	53.3	£11.61

INSTALLATION:



Step 1: Mount the camera on the Camera-Den™ whilst safely on the ground

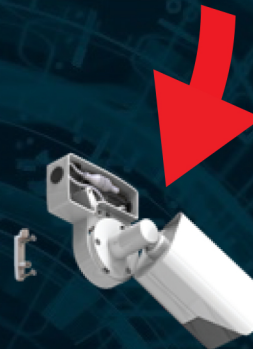


Step 2: Mount bracket on the wall.
(NB 6mm Screw/Plug Not Included)

NOTE: RECOMMENDED TORQUE FOR LID & MOUNTING BRACKET SCREWS - 1,5Nm --> 2,5Nm



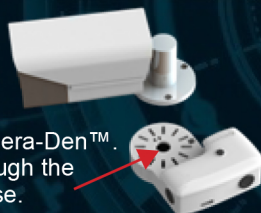
Step 4: Connect camera wires and close the unit with the cap. The Camera nest is IP 66 and has a UV Life of 25 years



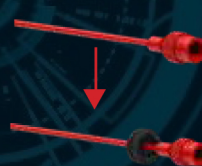
Step 3: Hook unit on the bracket and test/adjust the camera with a tester. All Connections accessible remain.

Step 1 continued:

① Place camera onto the Camera-Den™. Pull the camera cables through the hole in the middle of the base.



② Place Allbro stretch grommet over the camera fitting.



Allbro grommet stretches over most camera fittings

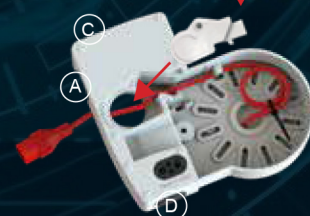
③ Cable tie the cable (A) and feed the rest of the fitting through opening (B).



④ Place grommet back to secure cable in place and protect the cabling from water seeping in.



⑤ Close the opening in STEP 3 with cap provided.



⚠ Please Note:

* Outer blank plugs (A, B & C) can be removed where applicable for cable glands or conduit fittings.

These blanks are NOT intended for use as cable grommets.



Diameter size up to 90mm

Diameter size up to 110mm

Camera-Den™ IS AVAILABLE IN TWO SIZES

Designed to accommodate most camera brands & sizes!



Available to order directly from

TMS GRID

COMBINE - CONSULT - CONNECT

www.tmsgrid.com

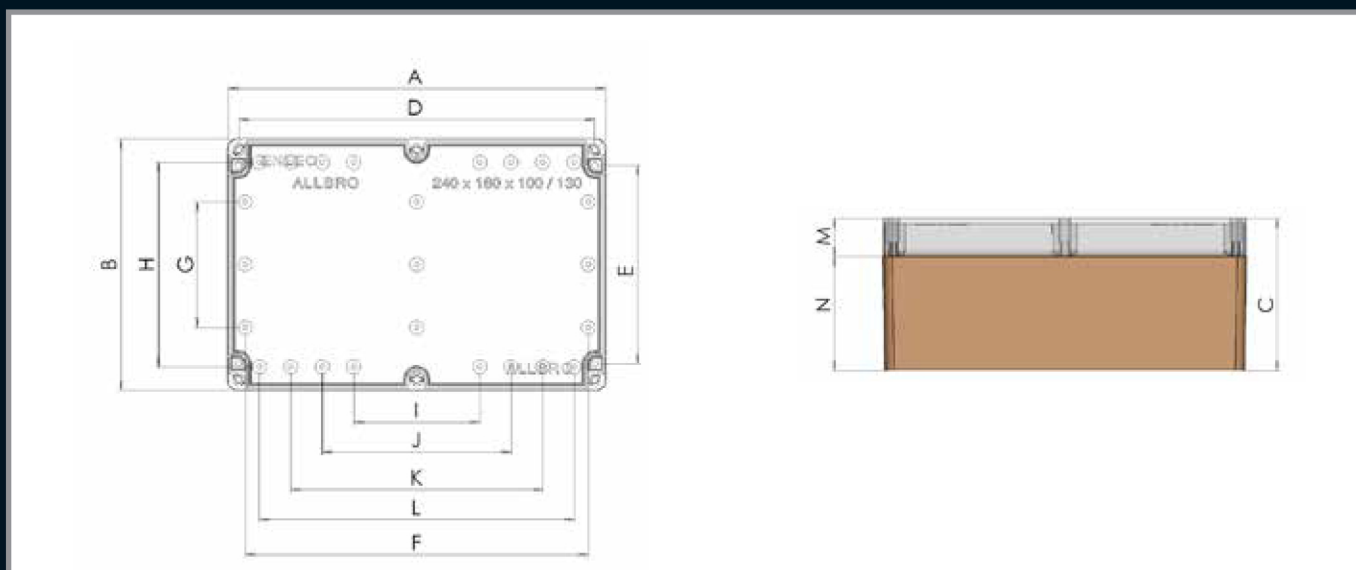
enquiries@tmsgrid.com

ALLBRO UK

ENLEC®

PRICE LIST





External Dimensions (mm)			Internal Dimensions (mm)												Part Number			Price (£)
A (Height)	B (Width)	C (Depth)	D	E	F	G	H	I	J	K	L	M	N	Clear Lid IP66	Grey Lid IP66	Device Plate Sold Separately		
80	80	55	68	50	58	N/A	58	N/A	N/A	N/A	40	15	40	TMS-ENL080806C	TMS-ENL080806P	TMS-ENL0808DP	£6.78	
120	70	55	89	57	74	N/A	46	NA	N/A	N/A	52	15	35	TMS-ENL120705C	TMS-ENL120705P	N/A	£8.51	
120	80	55	106	46	96	N/A	58	N/A	N/A	40	80	15	40	TMS-ENL120806C	TMS-ENL120806P	TMS-ENL1208DP	£7.90	
120	80	90	106	46	96	N/A	58	N/A	N/A	40	80	15	75	TMS-ENL120809C	TMS-ENL120809P	TMS-ENL1208DP	£12.13	
120	120	55	106	86	100	40	98	N/A	N/A	N/A	80	15	40	TMS-ENL121206C	TMS-ENL121206P	TMS-ENL1212DP	£11.82	
120	120	90	106	86	100	40	98	N/A	N/A	N/A	80	15	75	TMS-ENL121209C	TMS-ENL121209P	TMS-ENL1212DP	£12.67	
160	80	55	146	46	136	N/A	58	N/A	N/A	60	120	15	40	TMS-ENL160806C	TMS-ENL160806P	TMS-ENL1608DP	£13.12	
160	80	90	146	46	136	N/A	58	N/A	N/A	60	120	15	75	TMS-ENL160809C	TMS-ENL160809P	TMS-ENL1608DP	£13.42	
160	120	90	146	86	136	N/A	90	N/A	N/A	N/A	120	15	75	TMS-ENL161209C	TMS-ENL161209P	TMS-ENL1612DP	£14.47	
160	160	90	146	126	140	80	130	N/A	N/A	N/A	120	15	75	TMS-ENL161609C	TMS-ENL161609P	TMS-ENL1616DP	£15.77	
200	120	90	186	86	176	40	90	N/A	N/A	116	160	15	75	TMS-ENL201209C	TMS-ENL201209P	TMS-ENL2012DP	£16.70	
200	150	90	186	116	N/A	56	118	N/A	N/A	80	160	15	75	TMS-ENL201509C	TMS-ENL201509P	TMS-ENL2015DP	£18.42	
240	120	100	226	86	218	40	90	80	120	160	200	25	75	TMS-ENL241210C	TMS-ENL241210P	TMS-ENL2412DP	£19.10	
240	160	100	226	126	218	80	130	80	120	160	200	25	75	TMS-ENL241610C	TMS-ENL241610P	TMS-ENL2416DP	£20.04	
240	160	130	226	126	218	80	130	80	120	160	200	55	75	TMS-ENL241613C	TMS-ENL241613P	TMS-ENL2416DP	£23.95	
300	230	100	286	196	278	150	200	140	180	220	260	25	75	TMS-ENL302310C	TMS-ENL302310P	TMS-ENL3023DP	£37.99	
300	230	130	286	196	278	150	200	140	180	220	260	55	75	TMS-ENL302313C	TMS-ENL302313P	TMS-ENL3023DP	£41.31	
360	200	150	346	166	338	120	170	200	240	280	320	50	100	TMS-ENL362015C	TMS-ENL362015P	TMS-ENL3620DP	£54.72	

Part Number	Description
TMS-ENL-H	ENL-Hinges
TMS-ENL-M	ENL-Mounting Feet
TMS-ENL-4	ENL-2 Set 4 Screw Combo
TMS-ENL-6	ENL-6 Set Screw Combo



Enlec® Features

Polycarbonate enclosures for electronic & electrical applications



Mounting does NOT affect IP level
(Many enclosures require drilling which compromises IP level)

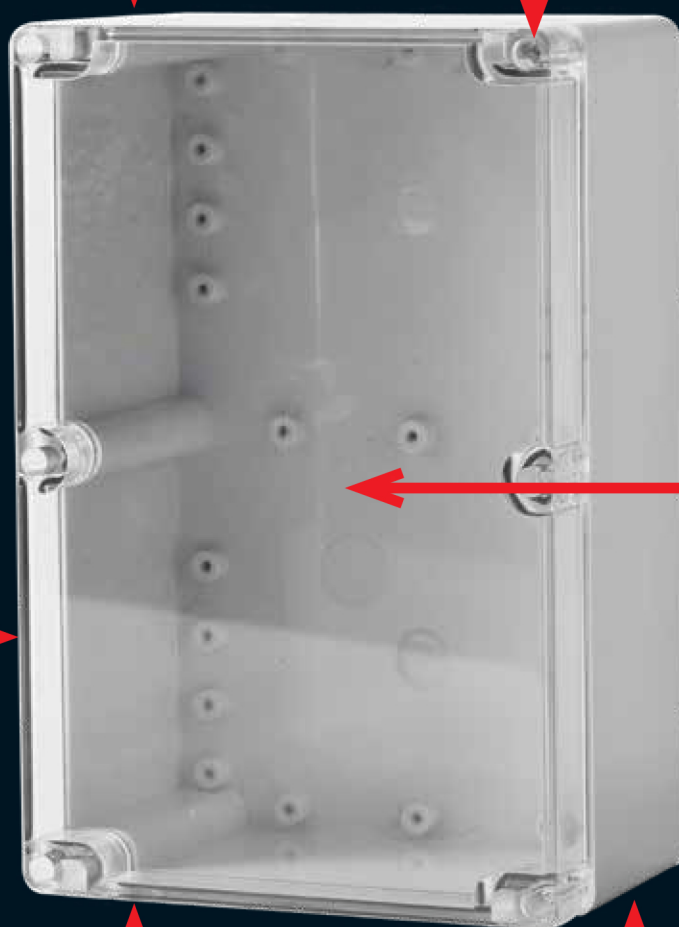


1/4 Turn Stainless steel screws

(Self tapping screws that deteriorate the plastic or plastic screws they mount for which are not durable)



18 Different sizes
(Widest range in South Africa)



Clean surface for mounting equipment or labels unlike other plastic enclosures that have unsightly spew/injection marks

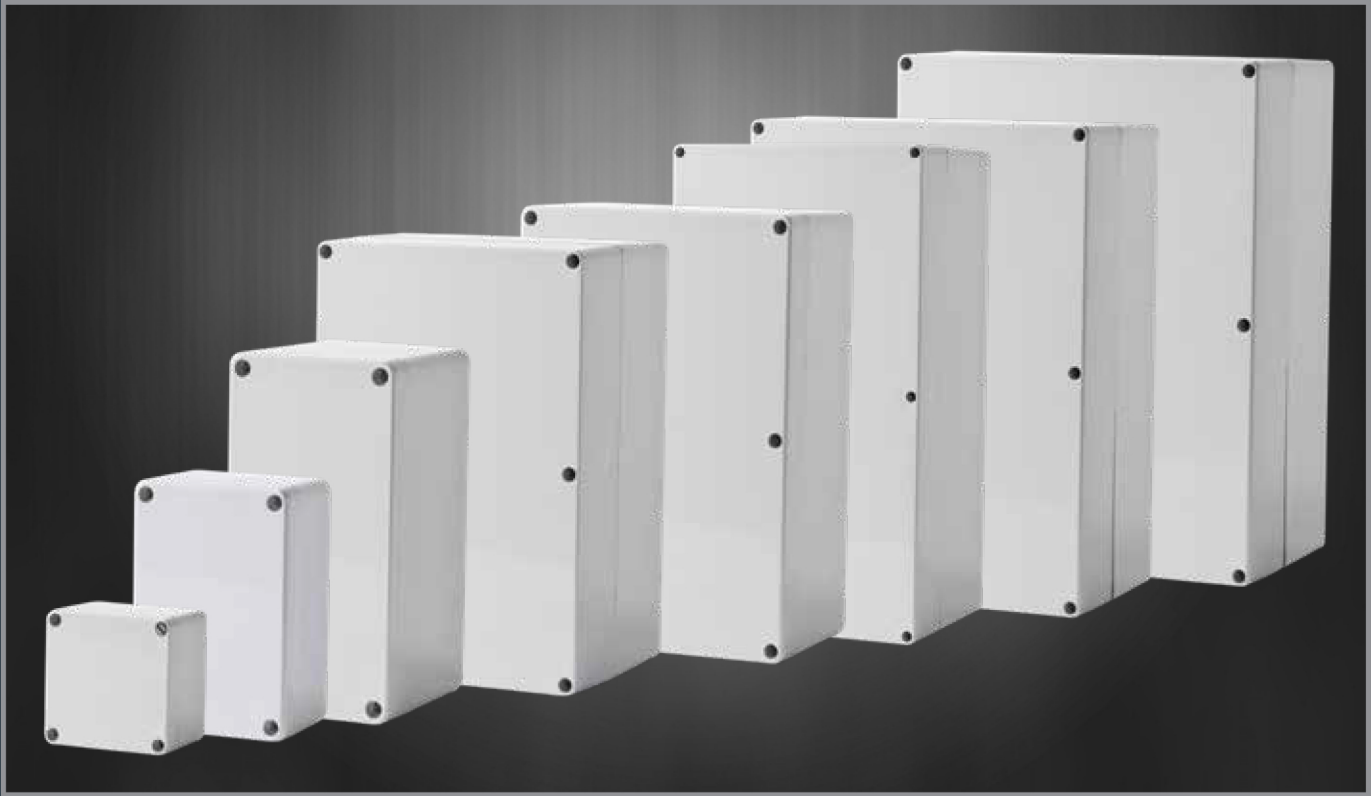


Flame Retardant High Quality Polycarbonate Material
(Base & Lid)
See UL 94 (V0) and Needle Flame (V0) on page 10

Halogen Free

Halogen Free

Material	Polycarbonate			
Operating Temperature	- 20°C to + 110°C			
Glow Wire Capability / Flammability	960° / UL94 V0			
Expected UV Life (Direct Exposure)	5-8 years (10-15 years - Indirect Exposure)			
IP Level	IP66			
IK Level	IK10			
Security Level	1	2	3	4





Available to order directly from

TMS GRID

COMBINE - CONSULT - CONNECT

www.tmsgrid.com

enquiries@tmsgrid.com

ALLBRO UK

OKARI®

PRICE LIST



Okari® Features

Modular wall mounted enclosures



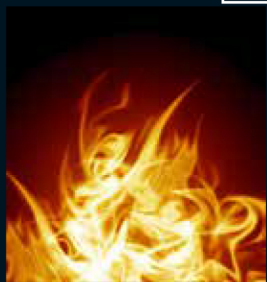
Weather & UV Resistant
(25 Year outdoor life)

Halogen Free

Halogen Free



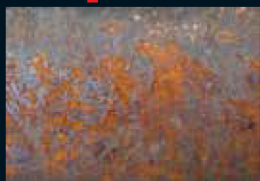
External mounting system ensures IP level is not compromised



Flame Retardant



External Hinges can be added



Durable GRP Material



Can be Colour Impregnated

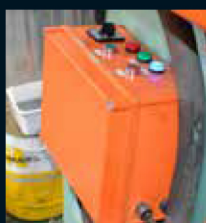


Multiple boxes can be joined using "INT" Interconnectors

Material	DMC (Dough Moulding Compound)			
Operating Temperature	+200°C on DMC lids and +110°C on Polycarbonate Lids			
Glow Wire Capability / Flammability	960° / UL94 V0			
Expected UV Life (Direct Exposure)	25 years +			
IP Level	IP68			
IK Level	IK9			
Security Level	1	2	3	4



Dimensions (mm)			Base (mm)	Lid (mm)	7035 RAL Base		Orange Base		Qty per box	Device Plate (Sold Separately)		Price (£)
H	W	D	D	D	Grey Lid	Clear Lid	Orange Lid	Clear Lid		SMC Version	Powder Coated Mild Steel	
					IP 68	IP 68	IP 68	IP 68				
186	151	135	90	45	TMS-OK0-G	TMS-OK0-GC	TMS-OK0-O	TMS-OK0-OC	4	TMS-OKM-0	TMS-OKM-0M	£27.26
280	185	180	135	45	TMS-OK1-G	TMS-OK1-GC	TMS-OK1-O	TMS-OK1-OC	4	TMS-OKM-1	TMS-OKM-1M	£32.13
280	280	180	135	45	TMS-OK2-G	TMS-OK2-GC	TMS-OK2-O	TMS-OK2-OC	2	TMS-OKM-2	TMS-OKM-2M	£39.35
370	280	180	135	45	TMS-OK3-G	TMS-OK3-GC	TMS-OK3-O	TMS-OK3-OC	2	TMS-OKM-3	TMS-OKM-3M	£50.22
560	370	180	135	45	TMS-OK4-G	TMS-OK4-GC	TMS-OK4-O	TMS-OK4-OC	1	TMS-OKM-4	TMS-OKM-4M	£78.59



Interconnectors

Part Number	Description
TMS-Q/INT1ORANGE	Okari 1 Interconnector Orange
TMS-Q/INT1GREY	Okari 1 Interconnector Grey
TMS-Q/INT2ORANGE	Okari 2 Interconnector Orange
TMS-Q/INT2GREY	Okari 2 Interconnector Grey
TMS-Q/INT3ORANGE	Okari 3 Interconnector Orange
TMS-Q/INT3GREY	Okari 3 Interconnector Grey



Accessories

Part Number	Description
TMS-OKPH-G	DMC Hinge Set -Grey
TMS-OKPH-O	DMC Hinge Set -Orange
TMS-OKM-MS	Stainless Steel Mounting Brackets
TMS-OK-BP	Blind Plug
TMS-OK-G/SCREWS	Cover Sealing Screws
TMS-OKARI-HAND	Handle



Available to order directly from

TMS GRID

COMBINE - CONSULT - CONNECT

www.tmsgrid.com

enquiries@tmsgrid.com

ALLBRO UK TERMINAL BOXES PRICE LIST



Terminal Box Features

High impact enclosures for tough environments



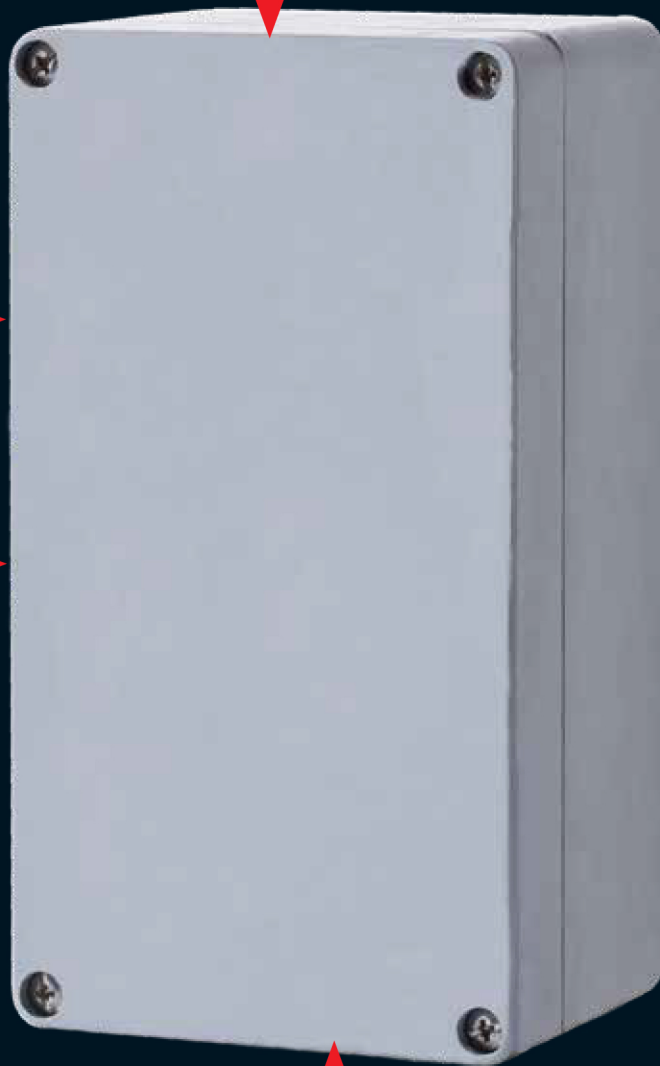
Weather & UV Resistant
(25 Year outdoor life)

Halogen Free

Halogen Free



Flame Retardant



Durable GRP Material

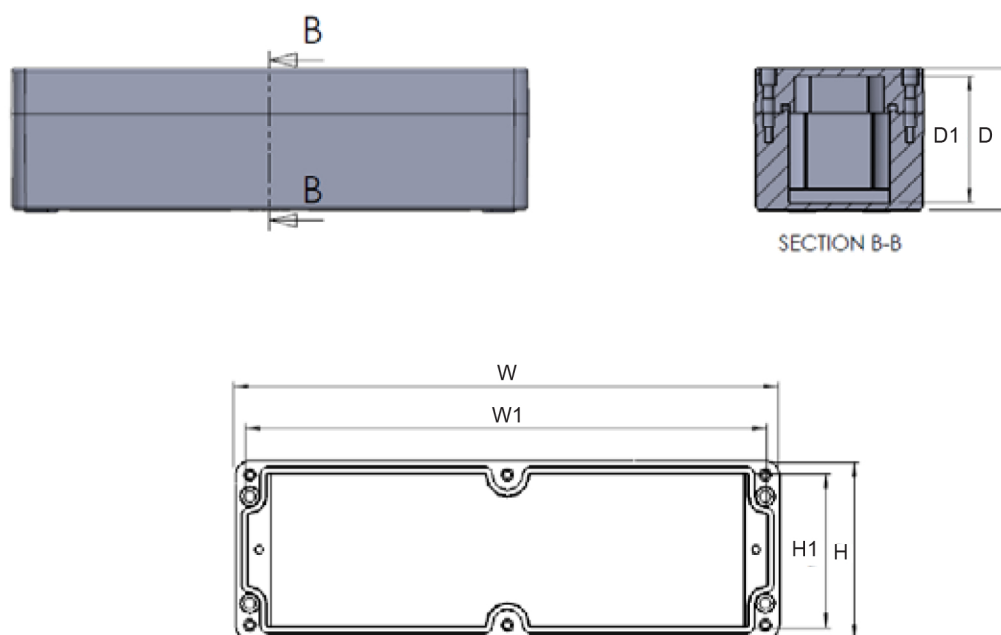


17 Different sizes

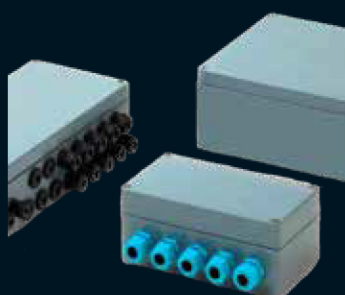


Versions Available





External Dimensions (mm)			Internal Dimensions (mm)			Part Number		IP Level	Qty per box	Price (£)
H	W	D	H1	W1	D1	Black (Eex)	Grey			
75	80	61	65	70	56	TMS-0808KE/I	TMS-0808POK/I	68	10	£15.08
75	110	64	65	100	54	TMS-0811KE/I	TMS-0811POK/I	68	10	£15.21
75	160	61	65	150	54	TMS-0816KE/I	TMS-0816POK/I	68	10	£16.07
75	190	61	65	180	54	TMS-0819KE/I	TMS-0819POK/I	68	10	£22.79
75	230	63	65	220	54	TMS-0823KE/I	TMS-0823POK/I	68	10	£26.28
120	125	90	110	115	80	TMS-1212KE/I	TMS-1212POK/I	68	10	£30.29
120	220	95	110	210	85	TMS-1222KE/I	TMS-1222POK/I	68	10	£37.07
160	160	95	147	147	86	TMS-1616KE/I	TMS-1616POK/I	68	10	£36.10
160	260	95	146	246	86	TMS-1626KE/I	TMS-1626POK/I	68	10	£40.80
160	360	95	146	346	86	TMS-1636KE/I	TMS-1636POK/I	68	10	£42.32
160	560	95	146	550	86	TMS-1656KE/I	TMS-1656POK/I	68	10	£62.79
250	255	128	237	242	113	TMS-2526KE/I	TMS-2526POK/I	68	10	£55.74
250	400	128	237	387	113	TMS-2540KE/I	TMS-2540POK/I	68	10	£67.22
250	600	128	237	587	121	TMS-2560KE/I	TMS-2560POK/I	68	10	£89.76
410	400	128	387	397	113	TMS-4140KE/I	TMS-4140POK/I	68	10	£93.63
250	255	163	237	242	149	TMS-2526KE/DI	TMS-2526POK/DI	68	10	£53.25
250	400	163	237	387	149	TMS-2540KE/DI	TMS-2540POK/DI	68	10	£65.00



* Versions Available

Terminal Boxes

High impact enclosures for tough environments



Material	DMC (Dough Moulding Compound)
Operating Temperature	-50° C to + 200° C
Glow Wire Capability / Flammability	960° / UL94 V0
Expected UV Life (Direct Exposure)	25 years +
IP Level	IP68
IK Level	IK9
Security Level	Security Level 1 for Round Enclosure and Security Level 2 for Square/Rectangle Enclosure



UB40 & UB41 Enclosure



External Dimensions (mm)			Internal Dimensions (mm)			Part Number	Description	IP Level	Qty per box	Price (£)
H	W	D	H	W	D					
115	115	83	90	90	70	TMS-040-702	UB40 (20mm)	68	20	£19.40
140	140	90	124	124	78	TMS-040-793	UB41 (25mm)	68	20	£21.99

UB40 Bottom Entry Enclosure



External Dimensions (mm)			Internal Dimensions (mm)			Part Number	Description	IP Level	Qty per box	Price (£)
H	W	D	H	W	D					
108	140	110	65	90	90	TMS-040-702/BE	UB40 Bottom Entry (20mm)	68	20	£19.40

BENEFITS & FEATURES

- For general industrial and mining electrical installations.
- No exposed metal parts.
- Dust and waterproof IP68.
- No drilling or tapping of cable entries required.
- Internal earthing to all entries and rail provided.

TMS GRID

COMBINE - CONSULT - CONNECT

For further information,
please contact:

TMS Grid Ltd
+44 (0) 191 417 2222
enquiries@tmsgrid.com

www.tmsgrid.com

Registered Address:
15 Tower Road, Washington, Tyne and Wear, NE37 2SH



Copyright© 2023 Allbro
All rights reserved